

NHVR Portal 2.0

Bulk Tanker Day
(NBTA)



NHVR Portal **Trucking Co Pty Ltd** JS Jane Smith

Heavy vehicle access / Route planner

Route planner

A double 36.5m operating under GML

Route **Vehicle** Travel details

A double 36.5m

Mass	Total	#1	#2	#3	#4	#5
<input type="checkbox"/> GML	79.0 t	6.5 t	16.5 t	20.0 t	16.5 t	20.0 t
<input type="checkbox"/> CML	81.0 t	6.5 t	17.0 t	21.0 t	17.0 t	21.0 t
<input type="checkbox"/> HML	85.0 t	6.5 t	17.0 t	22.5 t	17.0 t	22.5 t

Analyse alternatives

Map showing route alternatives:

- 1) Instant: A double 36.5m 79.0t Pre-approved
- 2) Instant alternative: B-double 19m 55.0t Notice

Single entry point for all heavy vehicle services



New services for industry:

- Access
 - Single national maps
 - Intelligent route planner
- My vehicle fleet
- Performance Based Standards
- Compliance information

New tools for road managers:

- Road Management Tool
- Network Builder Tool
- Asset Rapid Assessment Tool

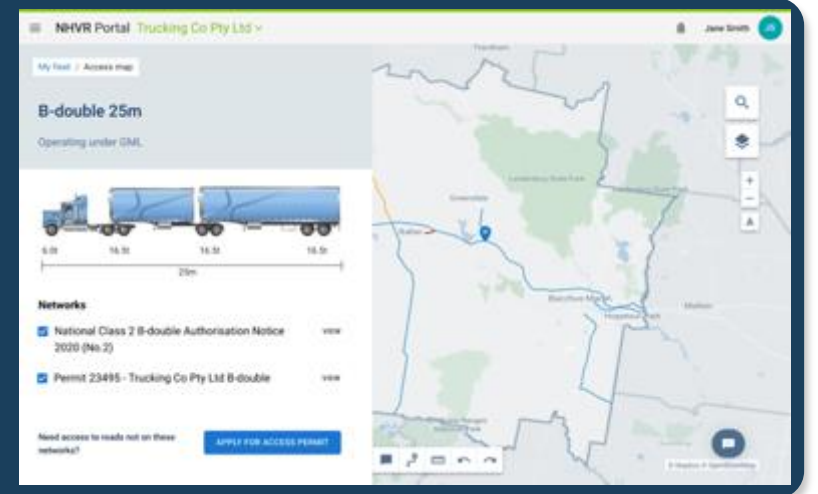
- Single national heavy vehicle access maps
- Maps updates immediately after approved changes
- Reduced permits and turnaround times
- Nationally consistent workflows and access certainty
- Transparent access decision making
- Designed to work on tablet & mobile devices



NHVR Portal 2.0

Implementing a
national heavy
vehicle access
system

Instantly
see where
my fleet
can safely
go



Discover where my future
innovative fleet investments could go

Sophisticated heavy vehicle route
planning

Trucking Co Pty Ltd

Services

My fleet

See your vehicle configurations, registration records and applications for PBS and Vehicle Standards

My access

Access maps and information on the roads and routes relevant to heavy vehicles

My compliance

NHVAS Accreditation and compliance information

Notifications

Shire of Moorabool updated 20 hours ago
Gazetted network

B-double 25m



Information request 4:02pm, 5 Mar 2022

Road Train 36.5m

 Awaiting review by Trucking Co Pty Ltd



Personalisation

Tooleybuc Road (B12)

Near: Murray Valley Highway, Piangil

 **Road Maintenance Works** - Lanes closed both directions

Road Maintenance Works activities occurring between 24/07/2022 and 16/09/2022 during the following times:
Weekdays 4:00 PM to 12:00 AM, Weekends 4:00 PM to 12:00 AM.
Altered speed limit during operation will be 40 and the traffic delay is expected to be Greater than 10 min.

Start: 24/07/2022

End: 16/09/2022



 **HAZARD Landslip - MACQUARIE PASS Illawarra**
Highway closed >

 **FLOODING - NARRABEEN TO OXFORD FALLS**
Wakehurst Parkway >

My fleet

My configurations

Marketplace

Vehicle units

🔍 Search by configuration ▾



B-double 19m



📍 [View access map](#) ✎ [Configuration](#)

A double (up to 36.5m)



📍 [View access map](#) ✎ [Configuration](#)

B triple (up to 35m)



📍 [View access map](#) ✎ [Configuration](#)

PBS - A double 30m



📍 [View access map](#) ✎ [Configuration](#)

My fleet

My configurations

Marketplace

Vehicle units

🔍 Search by configuration ▾



AB triple 40.5m



📍 [View access map](#) ✎ [Configuration](#)

B triple (up to 36.5m)



📍 [View access map](#) ✎ [Configuration](#)

PBS - A double 32m

New Design



📍 [View access map](#) ✎ [Configuration](#)

PBS - A double 36.5m



📍 [View access map](#) ✎ [Configuration](#)

My fleet / Access map

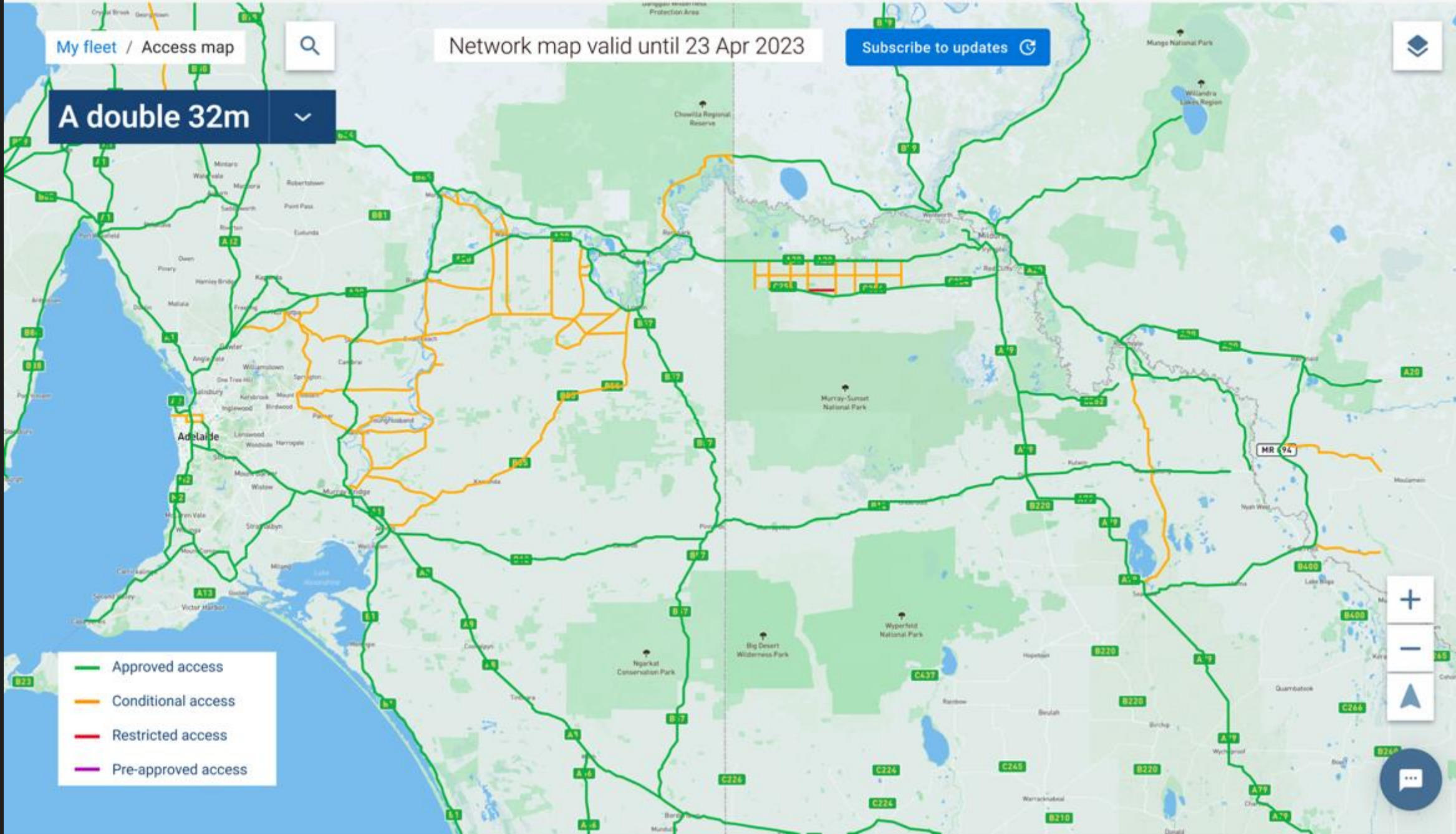


Network map valid until 23 Apr 2023

Subscribe to updates 🔄



A double 32m ▾



- Approved access
- Conditional access
- Restricted access
- Pre-approved access



My fleet / Access map

PBS A-double 32m New Design

Operating under PBS



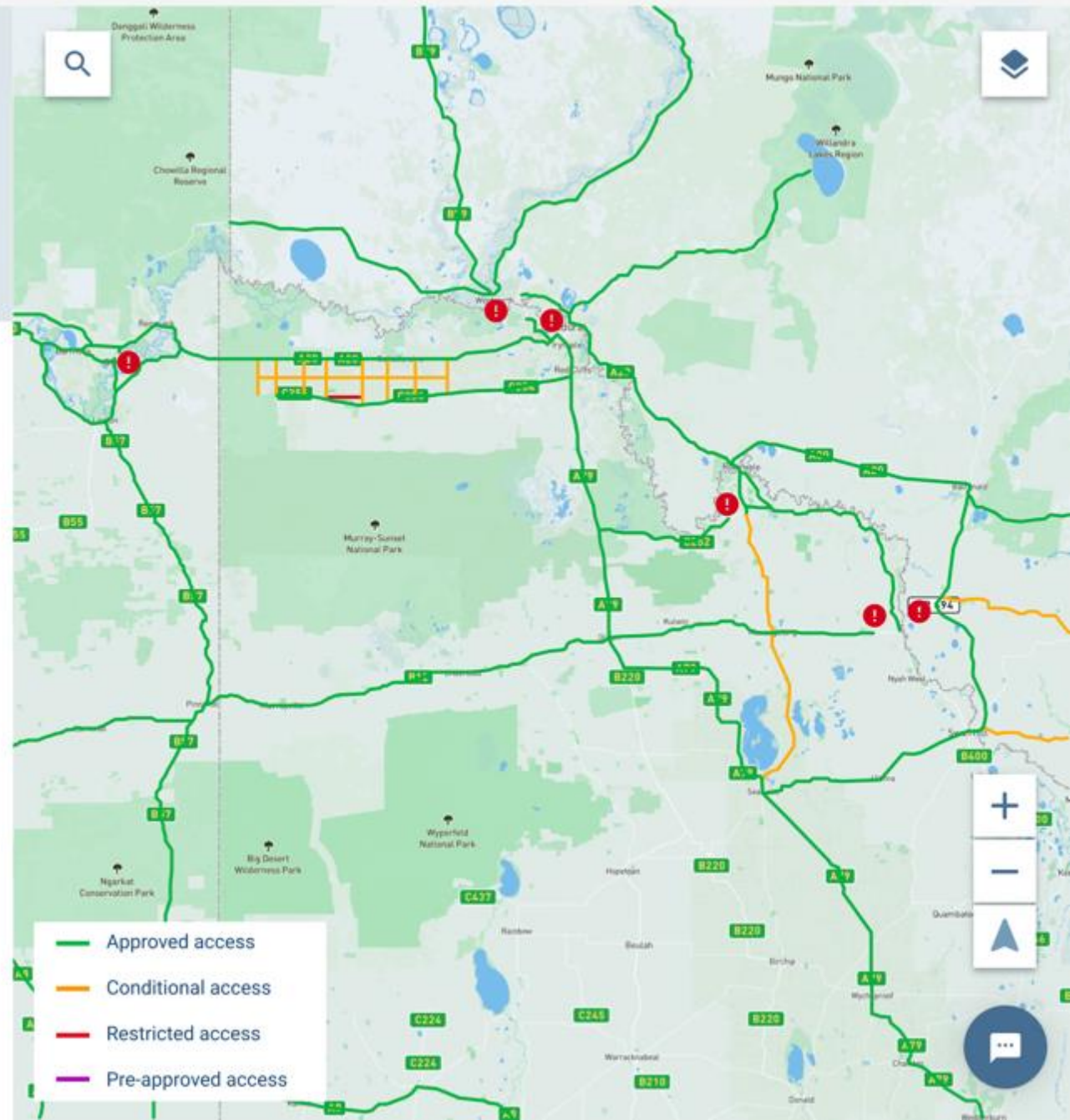
32m

Total	#1	#2	#3	#4	#5
85.0 t	6.5 t	17.0 t	20.5 t	20.0 t	21.0 t

Networks

- National Class 2 PBS Authorisation Notice View
- Permit 23495 - Trucking Co Pty Ltd A double View
- Pre-approved networks

[Instant application](#)



My fleet / Access map

PBS A-double 32m New Design

Operating under PBS



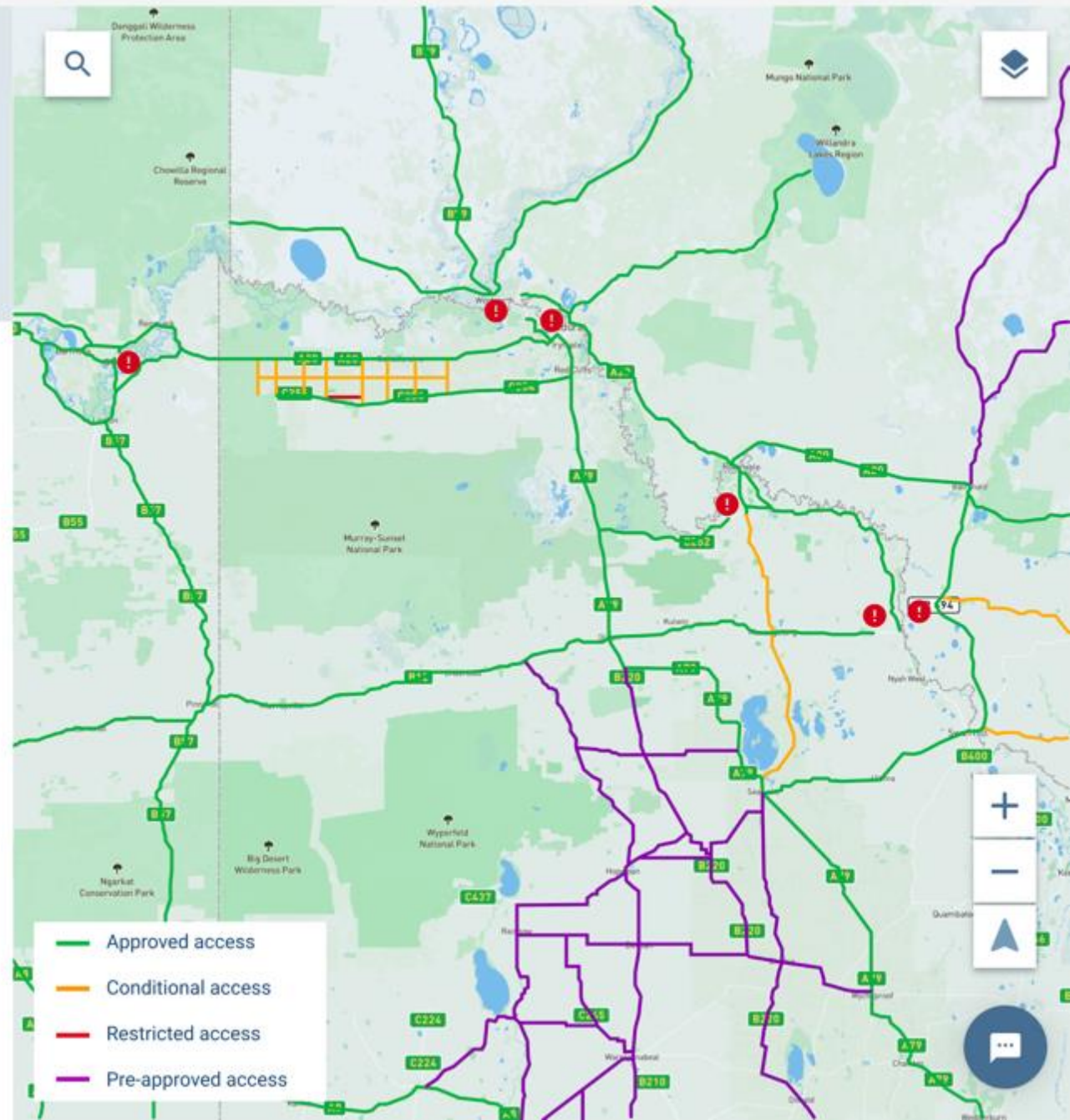
32m

Total	#1	#2	#3	#4	#5
85.0 t	6.5 t	17.0 t	20.5 t	20.0 t	21.0 t

Networks

- National Class 2 PBS Authorisation Notice View
- Permit 23495 - Trucking Co Pty Ltd A double View
- Pre-approved networks

[Instant application](#)



My fleet / Access map

PBS A-double 32m

New Design

Operating under PBS



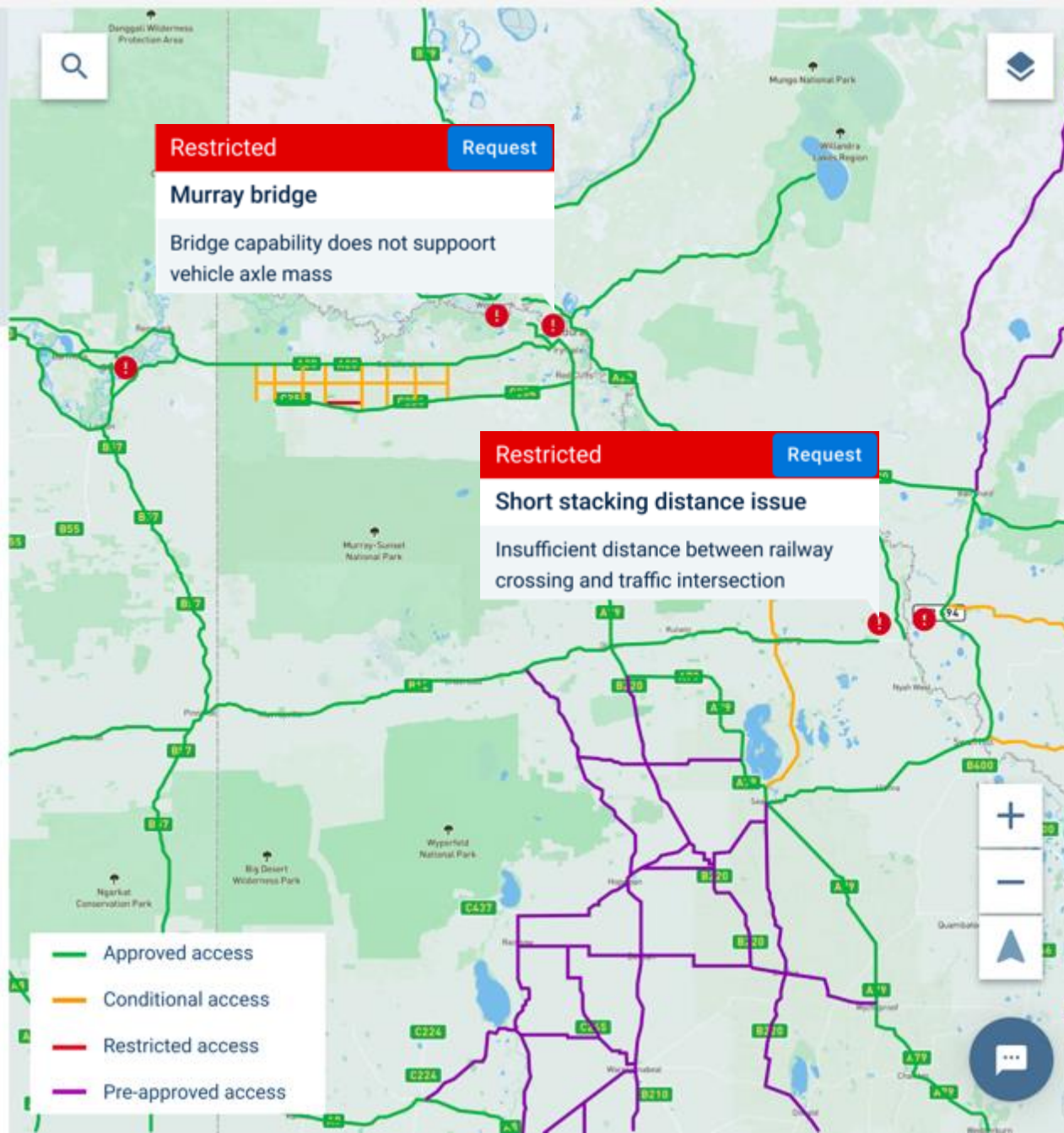
32m

Total	#1	#2	#3	#4	#5
85.0 t	6.5 t	17.0 t	20.5 t	20.0 t	21.0 t

Networks

- National Class 2 PBS Authorisation Notice View
- Permit 23495 - Trucking Co Pty Ltd A double View
- Pre-approved networks

Instant application



My fleet / Access map

PBS A-double 32m

New Design

Operating under PBS



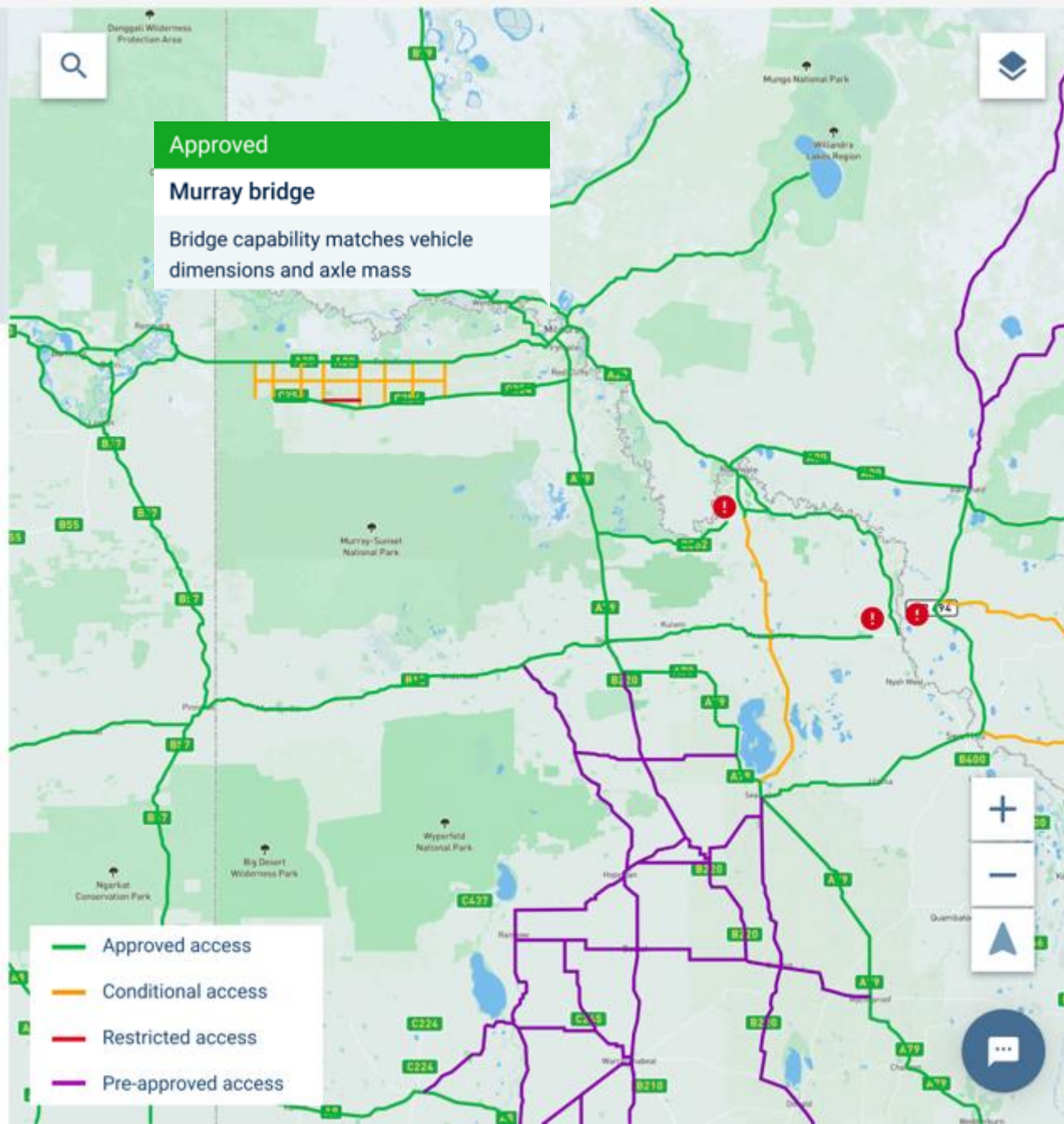
32m

Total	#1	#2	#3	#4	#5
79.0 t	6.5 t	16.0 t	20.0 t	16.5 t	20.0 t

Networks

- National Class 2 PBS Authorisation Notice View
- Permit 23495 - Trucking Co Pty Ltd A double View
- Pre-approved networks

Instant application





NHVR Portal

2.0

All access maps & decisions
will be maintained in the
NHVR Portal

- Your right to information on access decisions applies equally to automated systems.
- To understand why access was granted or rejected requires transparency on:
 - the decision system automation rules and settings
 - the information used by the system at the time the decision was made

Road Manager tools in the NHVR Portal

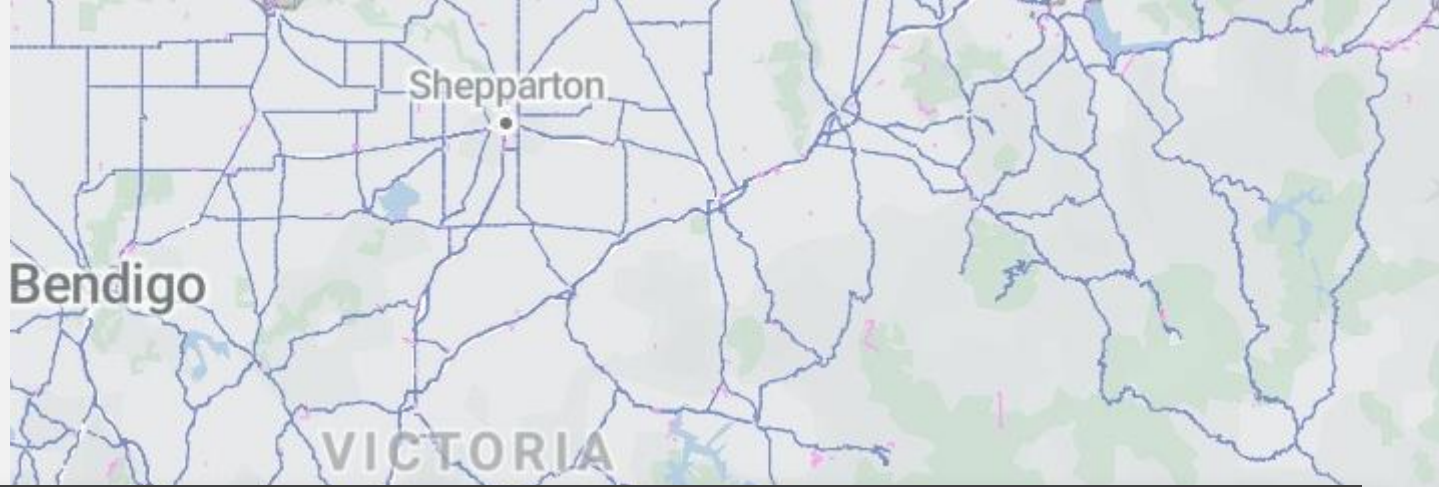


- **Road Management Tool**
- **Network Builder Tool**
- **Asset Rapid Assessment Tool**

All tools are made available to all road managers free of charge



NHVR Portal 2.0




Road Management Tool


- Maintaining who is responsible for what road ensures decisions are made by the right manager

Department of Transport - Victoria


Services

 **Road management**

Manage the authorities for granting heavy vehicle access consent

 **Network builder**

Plan, manage & publish networks in your area of responsibility

 **Asset capability**

Tools to define the heavy vehicle access capability of bridges & culverts

Notifications

Shire of Moorabool updated 20 hours ago
Gazetted network

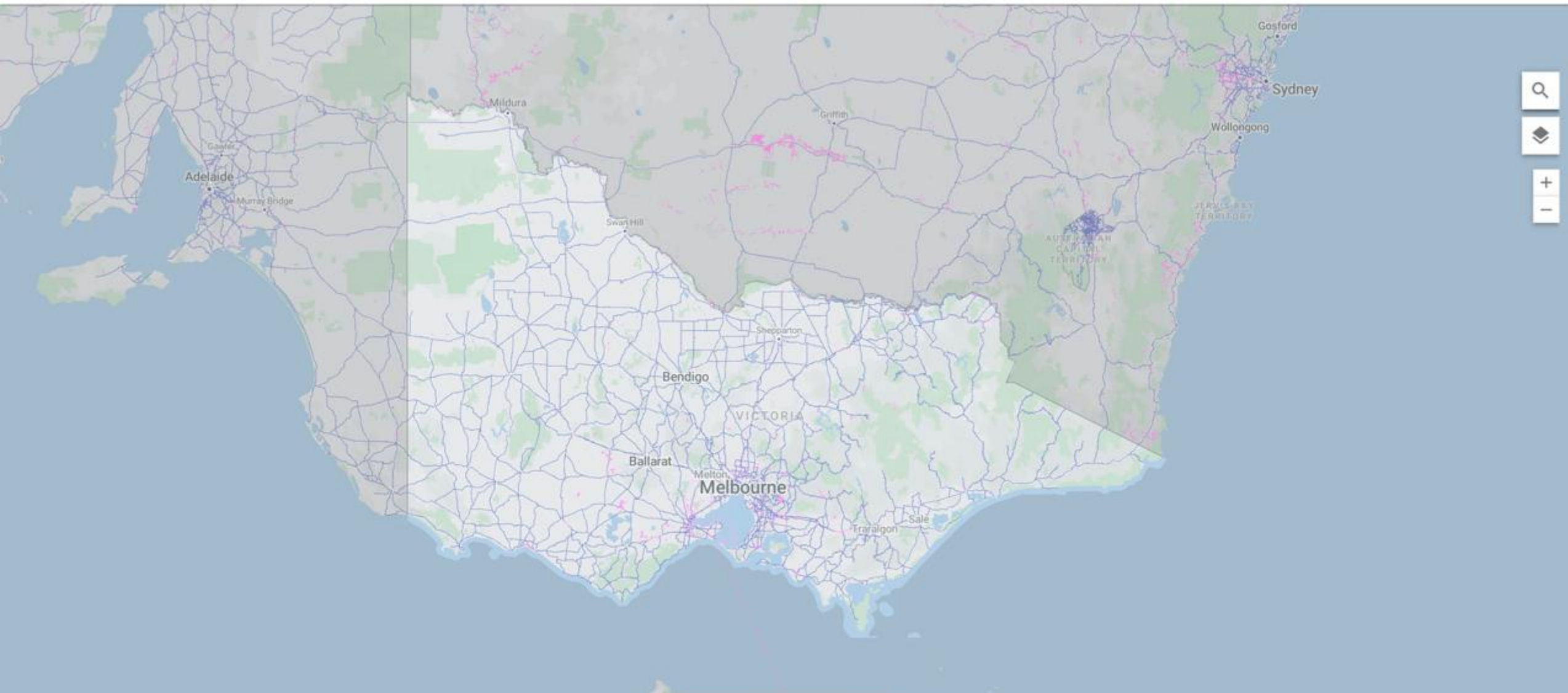
B-double 25m ⋮

NHVR information request 4:02pm, 5 Mar 2022

Road Train 36.5m

Awaiting review by Local Shire Council ⋮





🔍
📍
+
-

ROAD TRANSFER REQUESTS

📍 🗺️ 📏 📐 🔍 + - 🗑️ 🗨️ ↶ ↷



Road Ownership Transfer Requests

Default view MANAGE VIEWS COLUMNS FILTERS DENSITY EXPORT RESET

Outcome	From Road Manager	Proposal T...	To Road Manager	Roads
Ready for review	Moonee Valley City Council	Transfer	Department of Transport - Victoria	Albion Street
Accepted	City of Melbourne	Transfer ...	Department of Transport - Victoria	
Accepted		Transfer ...	Department of Transport - Victoria	Derrimut Road
Ready for review	Wyndham City Council	Transfer	Department of Transport - Victoria	Derrimut Road
Ready for review	Wyndham City Council	Transfer	Department of Transport - Victoria	Derrimut Road
Ready for review	Wyndham City Council	Transfer	Department of Transport - Victoria	Princes Highway Serv
Ready for review	City of Maribyrnong	Transfer	Department of Transport - Victoria	River Street
Accepted		Transfer ...	Department of Transport - Victoria	Wurundjeri Way
Accepted		Transfer ...	Department of Transport - Victoria	West Gate Tunnel
Accepted	City of Melbourne	Transfer ...	Department of Transport - Victoria	Elizabeth Street

Rows per page: 10 1-10 of 147

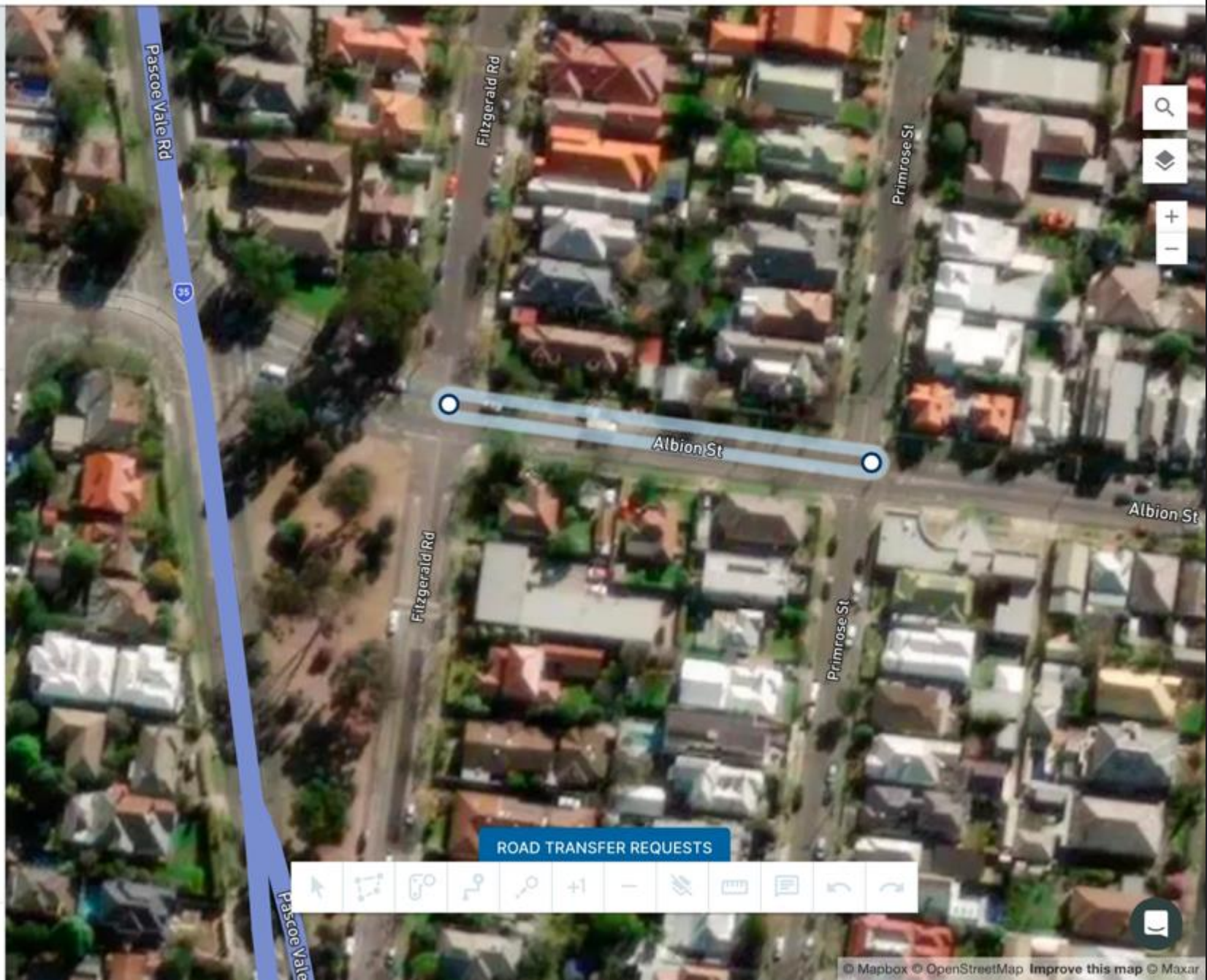
Management claim

Albion Street

Segment	From	To
3275089	Moonee Valley City Council	Department Of Transport - Victoria

Moonee Valley City Council has transferred management of road segments to Department Of Transport - Victoria

REJECT ACCEPT



ROAD TRANSFER REQUESTS



NHVR Portal 2.0



Network Builder Tool

- Self service solution enabling all road managers to add or remove roads/conditions/restrictions to access network maps in real-time
- Automated consultation notifications to industry for changes reducing access

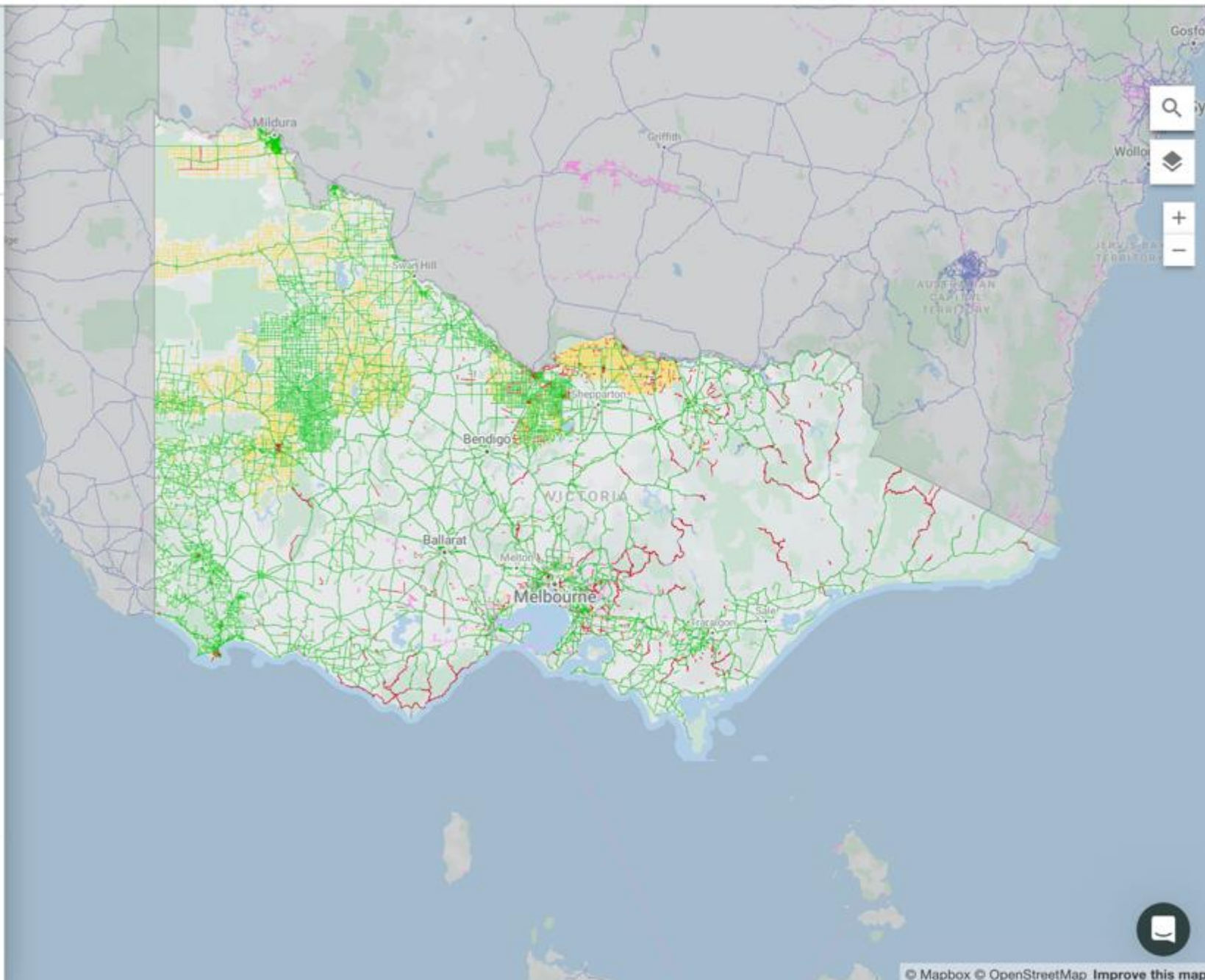
Network

Published

Victoria B-Double Network

ACTIONS ▾

Details Access Comments



Network

Published

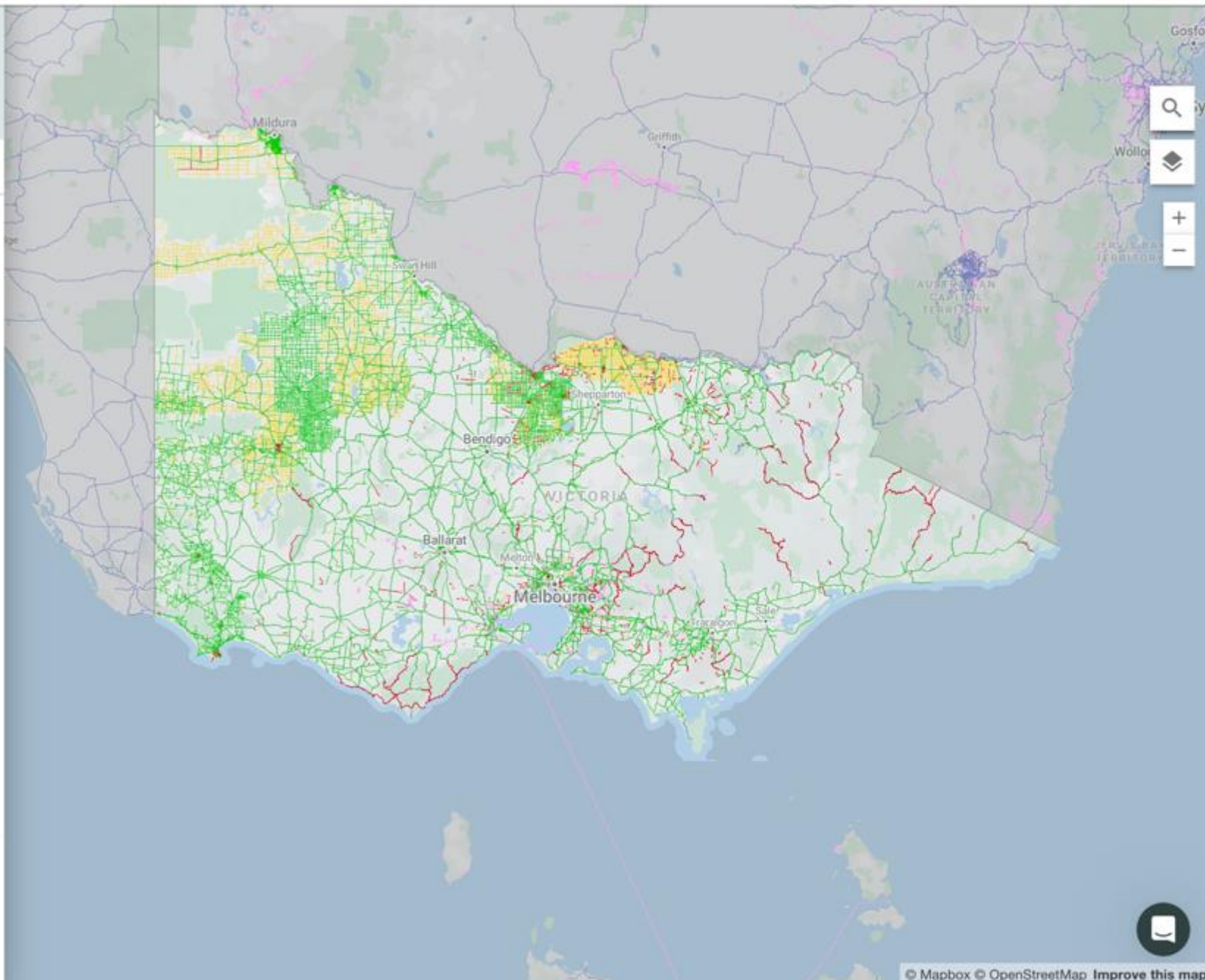
Victoria B-Double Network

ACTIONS

Details Access Comments

- Update network
- Duplicate network

CLOSE



Victoria B-double Network Update

Draft

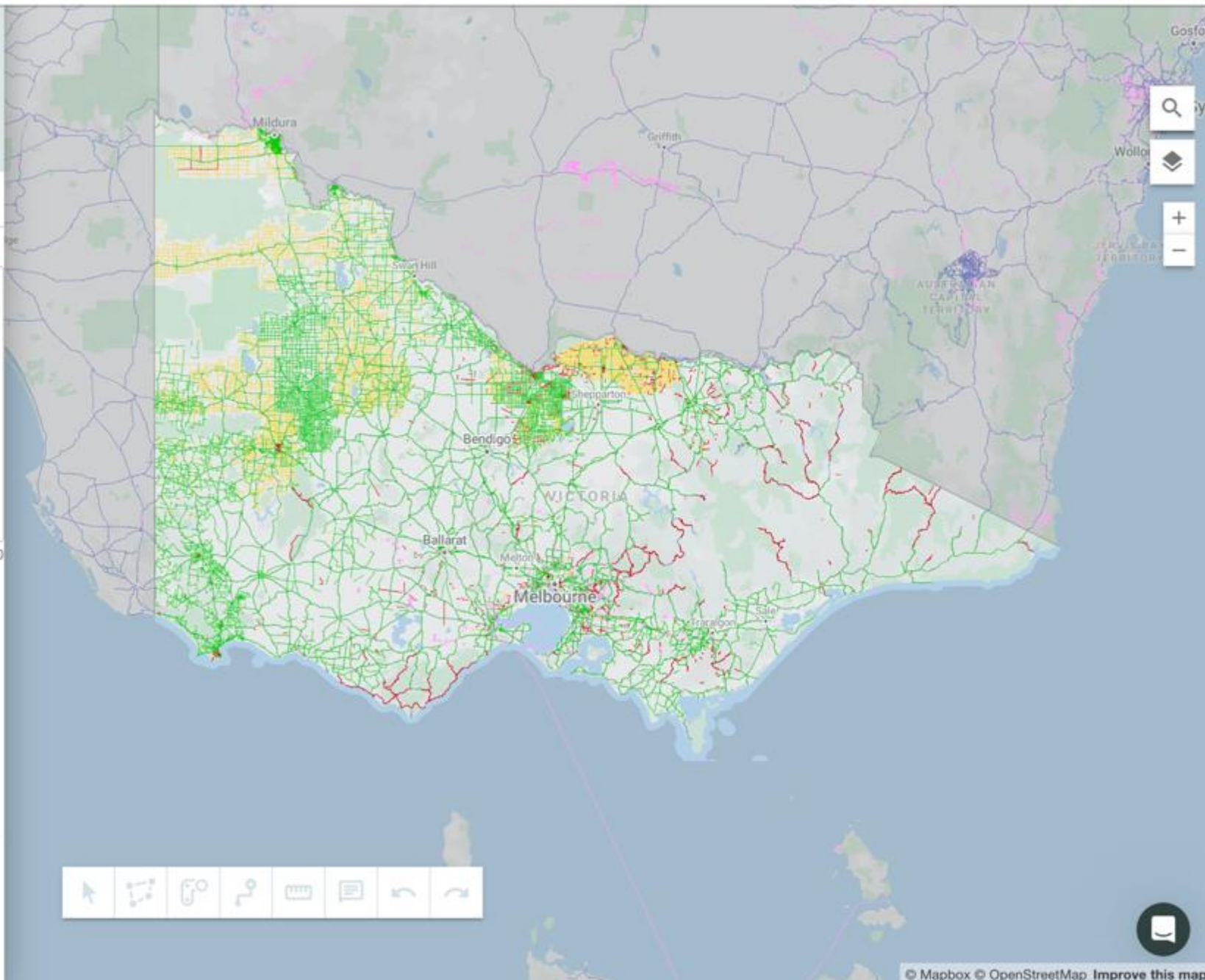
Expanding network in Shepparton

Details Updates Comments

Description

0/500

CANCEL SAVE DRAFT



Victoria B-double Network Update

Draft

Expanding network in Shepparton

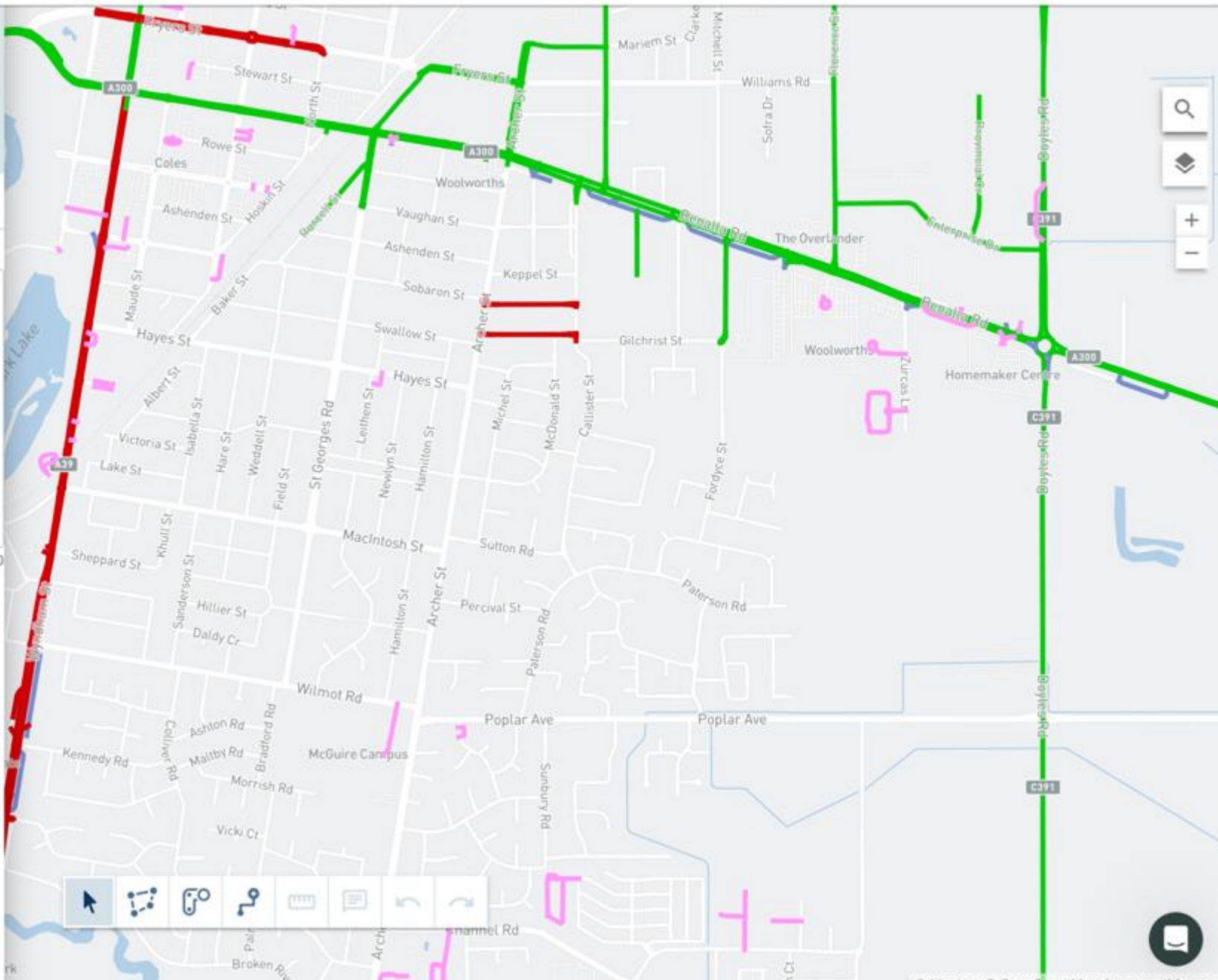
Details Updates Comments

Description

0/500

CANCEL

SAVE DRAFT



Victoria B-double Network Update

Draft

Expanding network in Shepparton

Details Updates Comments

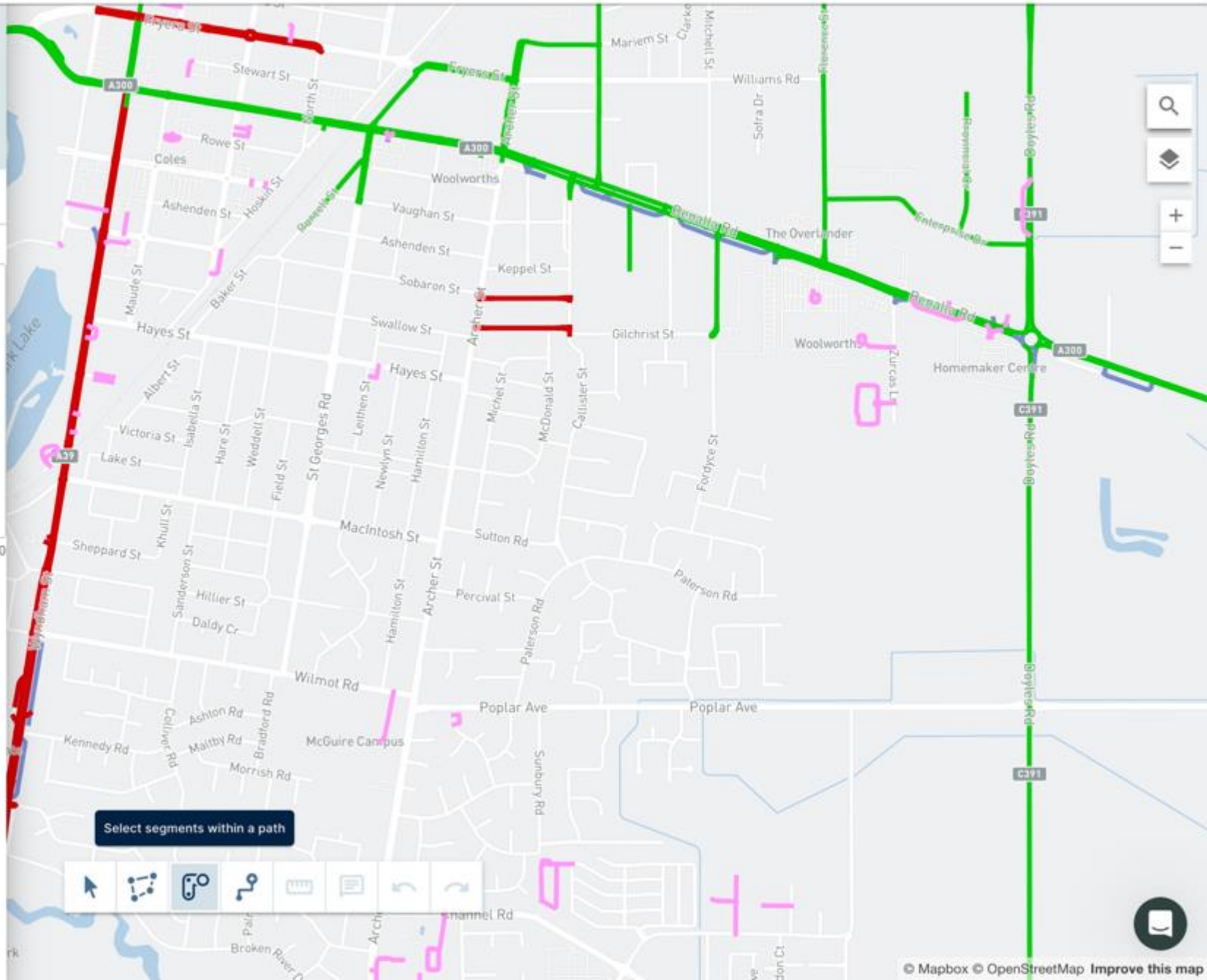
Description

0/500

Select segments within a path

CANCEL

SAVE DRAFT



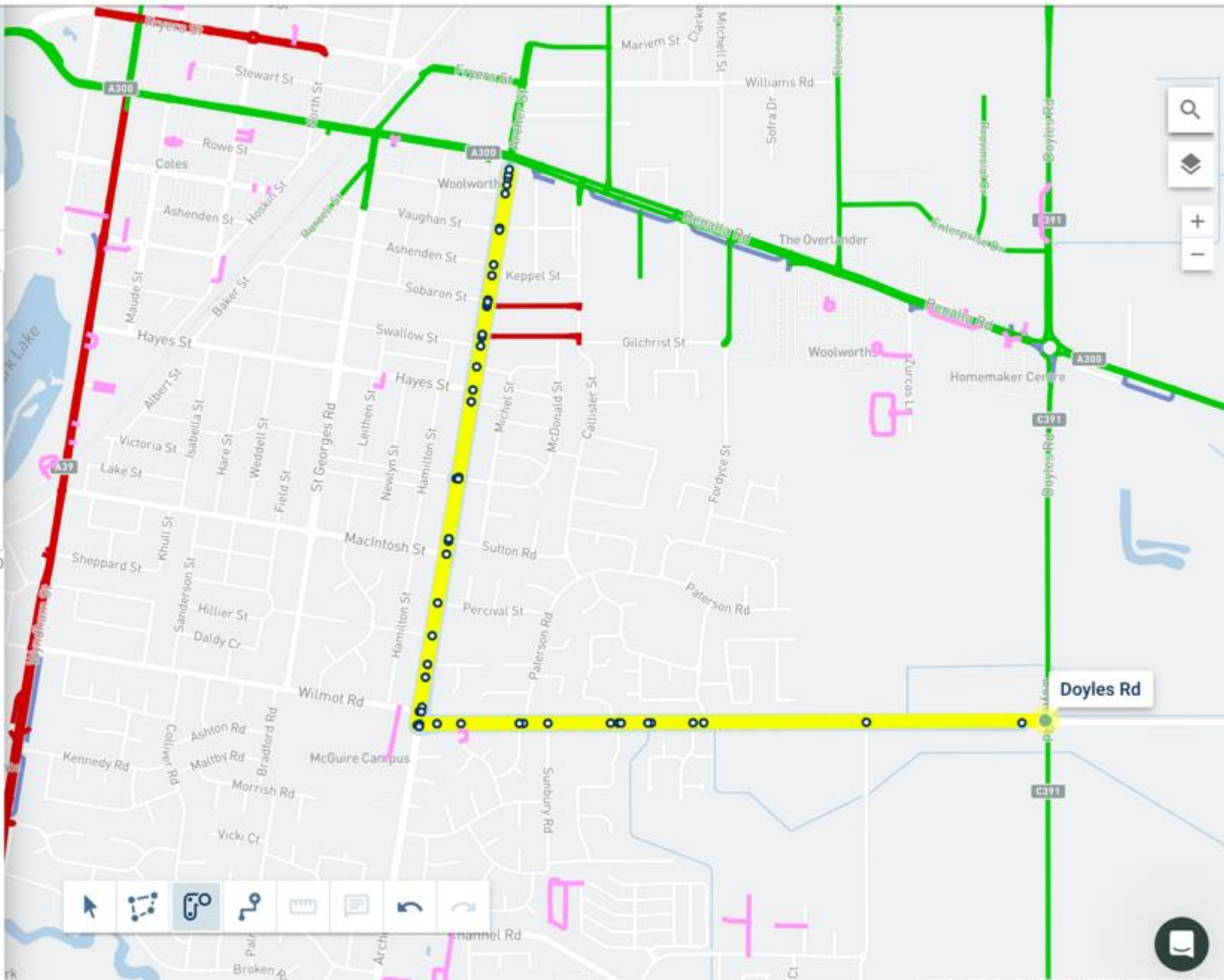
Victoria B-double Network Update

Draft

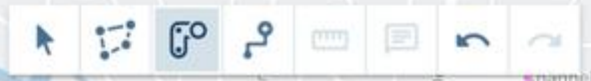
Expanding network in Shepparton

Details Updates Comments

Description



CANCEL SAVE DRAFT



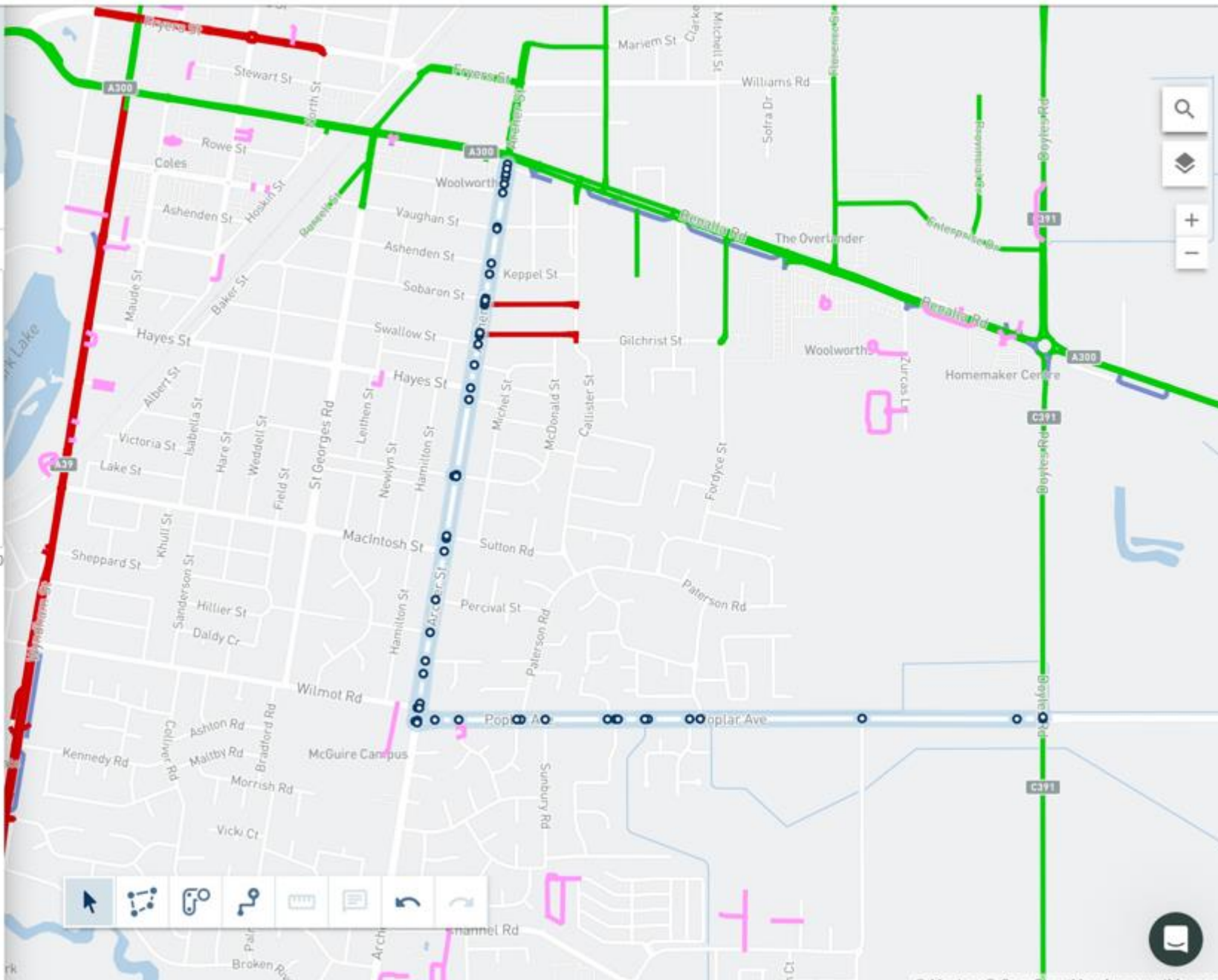
Victoria B-double Network Update

Draft

Expanding network in Shepparton

Details Updates Comments

Description



CANCEL

SAVE DRAFT



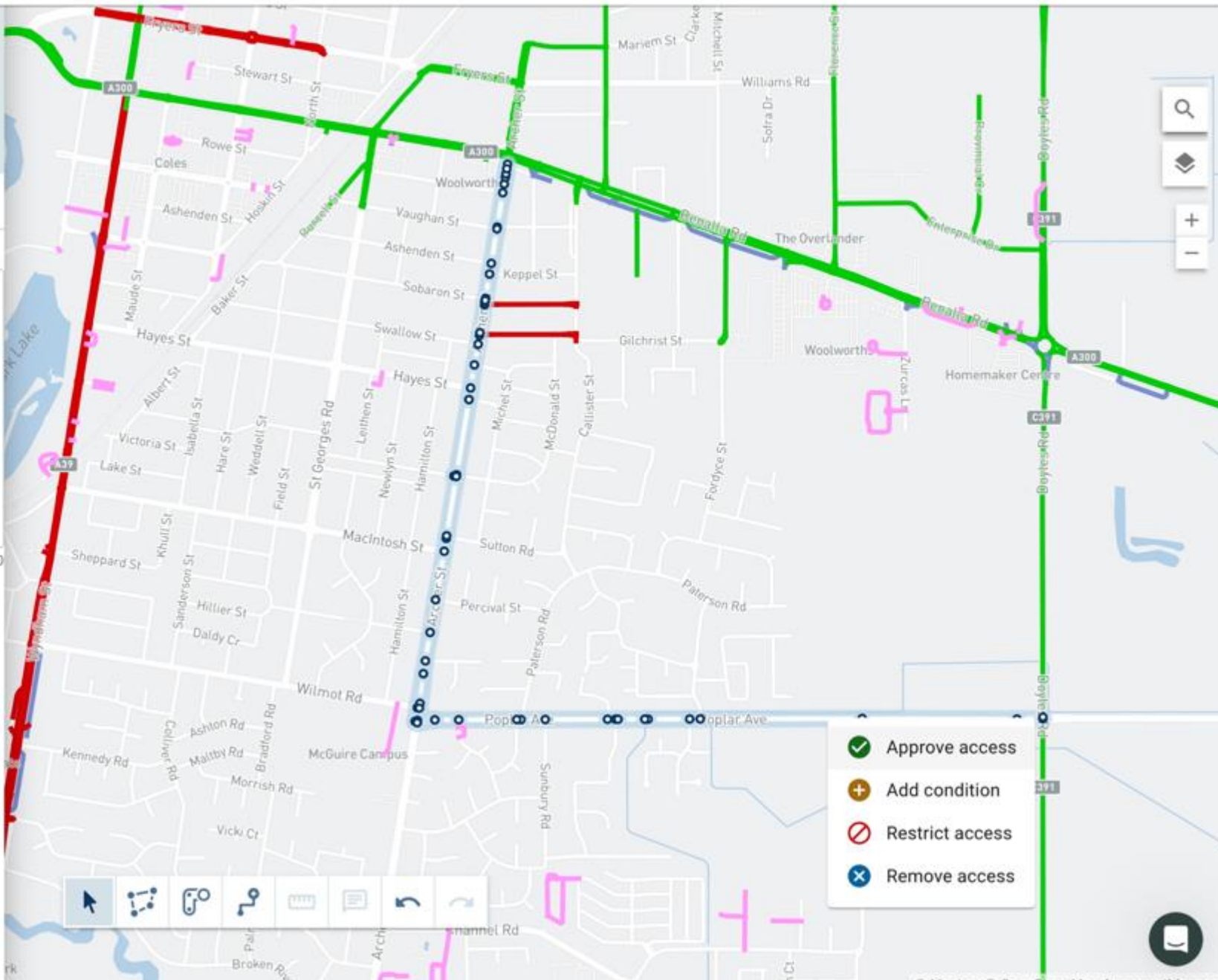
Victoria B-double Network Update

Draft

Expanding network in Shepparton

Details Updates Comments

Description



CANCEL

SAVE DRAFT

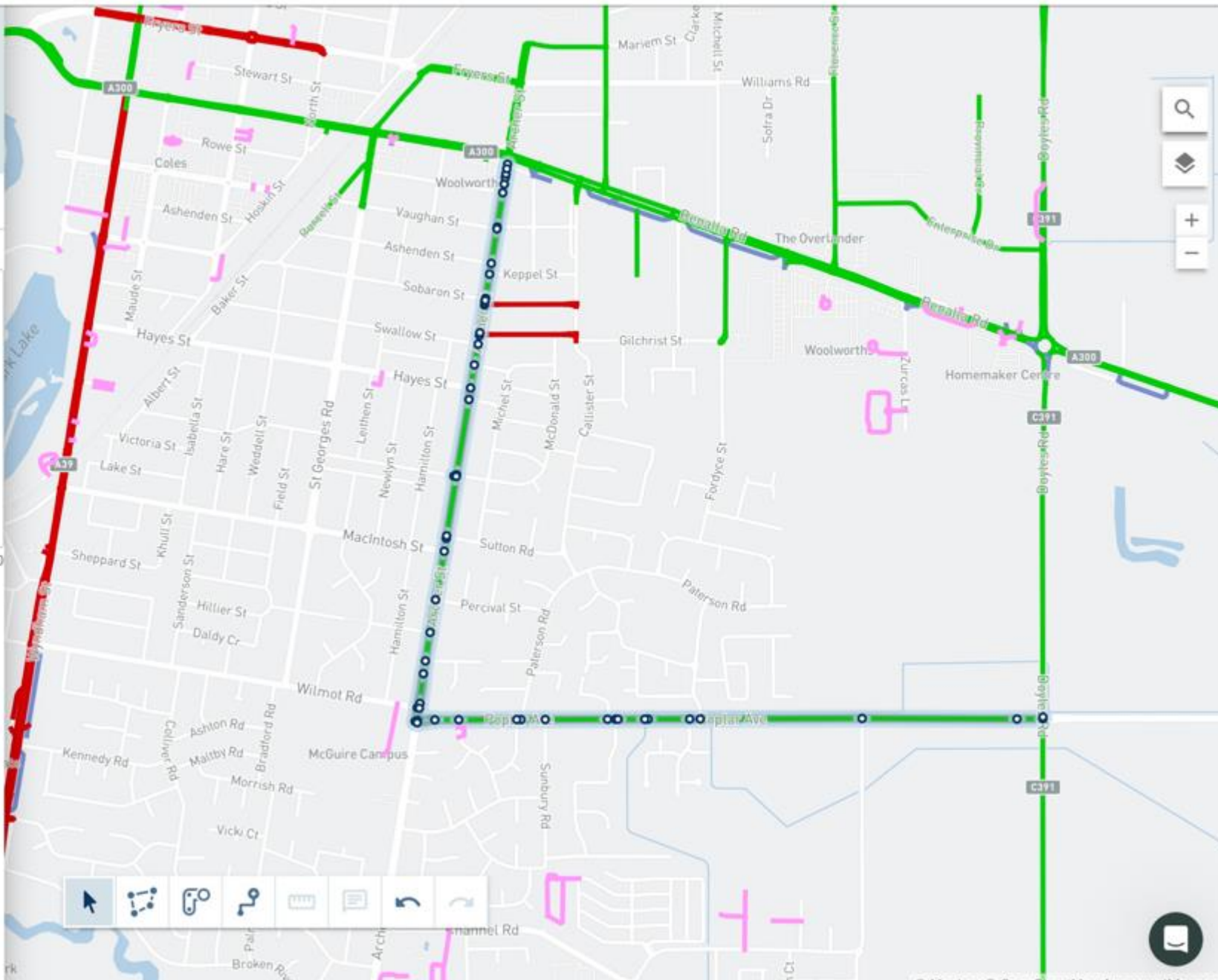
Victoria B-double Network Update

Draft

Expanding network in Shepparton

Details Updates Comments

Description



CANCEL

SAVE DRAFT



NHVR Portal 2.0



Asset Rapid Assessment Tool

- An automated assessment tool designed for transparent, consistent, data-driven heavy vehicle access decisions for bridges



Assets > Asset

Manage reference vehicle

Vehicle name
T44

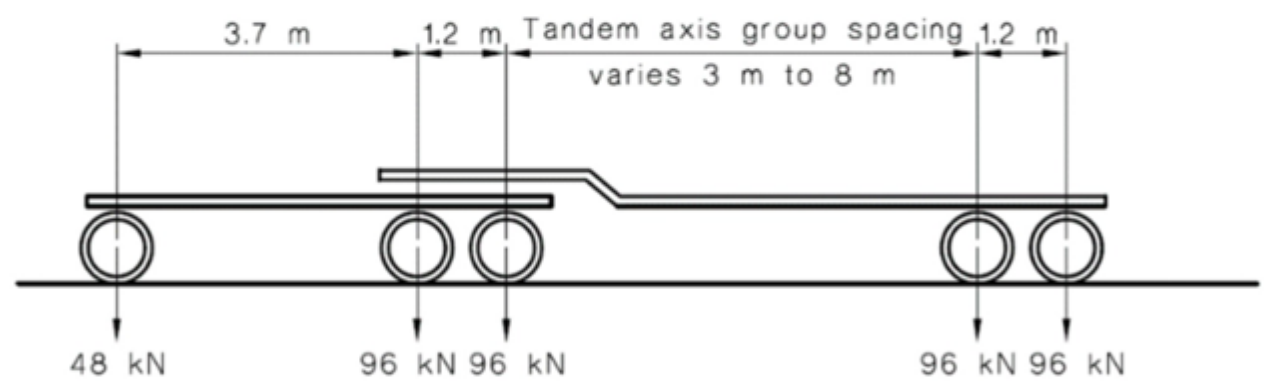
Activation status
Active

VEHICLE LOADING PARAMETERS CALCULATION SETTINGS LOAD EFFECTS

Reference vehicle
T44

Combination group
ARAT Design Vehicle

Combination
T44



ELEVATION VIEW

AXLE GROUPS

Vehicle component 1
T44



Assets









Manage asset

- ASSET DETAILS
- SPAN DETAILS
- SPATIAL DETAILS
- ATTACHMENTS
- CAPABILITY
- TEST VEHICLES**
- COMMENTS
- REVIEW

Test Vehicles

ADD TEST VEHICLE

Default view MANAGE VIEWS COLUMNS FILTERS DENSITY EXPORT RESET

Vehicle	Combination	Permit case num...	Road manager decision ...	Line model analysis result	Historical analysis result	Decision notes
	Prime mover towing OS/OM/OSO...	200010r1v1	Allow access	Equal to reference vehicles	Equal to historical vehicles	
	Prime mover towing OS/OM/OSO...		Allow access	Equal to reference vehicles	Worse than historical vehicles	
	Prime mover towing OS/OM/OSO...		Undecided	Equal to reference vehicles	No historical vehicles	
	Prime mover towing OS/OM/OSO...	200010r1v1	Undecided	Equal to reference vehicles	Equal to historical vehicles	
	No combination		Undecided	No reference vehicles	No historical vehicles	
	Prime mover towing OS/OM/OSO...	558391r1v1	Undecided	Equal to reference vehicles	Worse than historical vehicles	
	Prime mover towing OS/OM/OSO...		Undecided	Worse than reference vehicles	Worse than historical vehicles	
	Prime mover towing OS/OM/OSO...	558391r1v1	Undecided	Equal to reference vehicles	Worse than historical vehicles	

Rows per page: 10 1-8 of 8



[Assets](#) > [Asset](#)

Manage test vehicle

Overall result

Line model analysis result

Equal to reference vehicles

Historical analysis result

Equal to historical vehicles

Vehicle

Prime mover towing OS/OM/OSOM load

Asset Name

ARAT-TEST

Road manager decision

Road manager decision based on result

Allow access ▾

Decision recorded by

John Barry

Decision recorded on

13/03/2023

Decision notes (optional)

0/3500

Configuration



Vehicle specifications





Vehicle specifications



Calculation settings

Travel Position

Live Load Factor (LLF)

Dynamic Load Allowance (DLA)

In-lane

1

0.5

Results

LINE MODEL ANALYSIS RESULT

HISTORICAL ANALYSIS RESULT

LOAD EFFECTS

Span Number	Max positive moment (kNm)	Max negative moment (kNm)	Max shear force (kNm)	Max pier reaction (kNm)
1	2.70 = 1619.10 / 600.43 T44- Test 13/3/23	0 (peak value) A160	2.82 = 784.82 / 277.97 T44- Test 13/3/23	1.94 = 917.86 / 472.12 T44- Test 13/3/23
2	2.70 = 1619.10 / 600.43 T44- Test 13/3/23	0 (peak value) A160	2.82 = 784.82 / 277.97 T44- Test 13/3/23	0 (peak value) A160

CLOSE





NHVR Portal 2.0

Roadmap

2022 - 2023

2023 - 2025

2025 - 2030

Single national map

Road Manager network builder

Automated access under notice for any vehicle type

Automated asset assessment

Instant pre-approved permits

Data



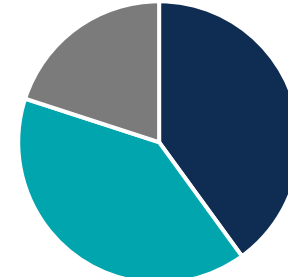
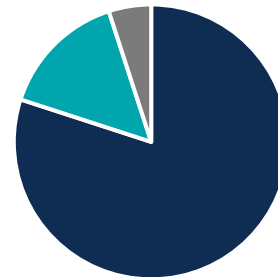
Capability



■ Permit

■ Pre-approval

■ Notice



Thank you

For more information:

13 NHVR (13 64 87)

digital@nhvr.gov.au

nhvr.gov.au