

# **Tanker Day**

## **Tanker Maintenance Inspections**

**Dave Ingham**

**NSW EPA**

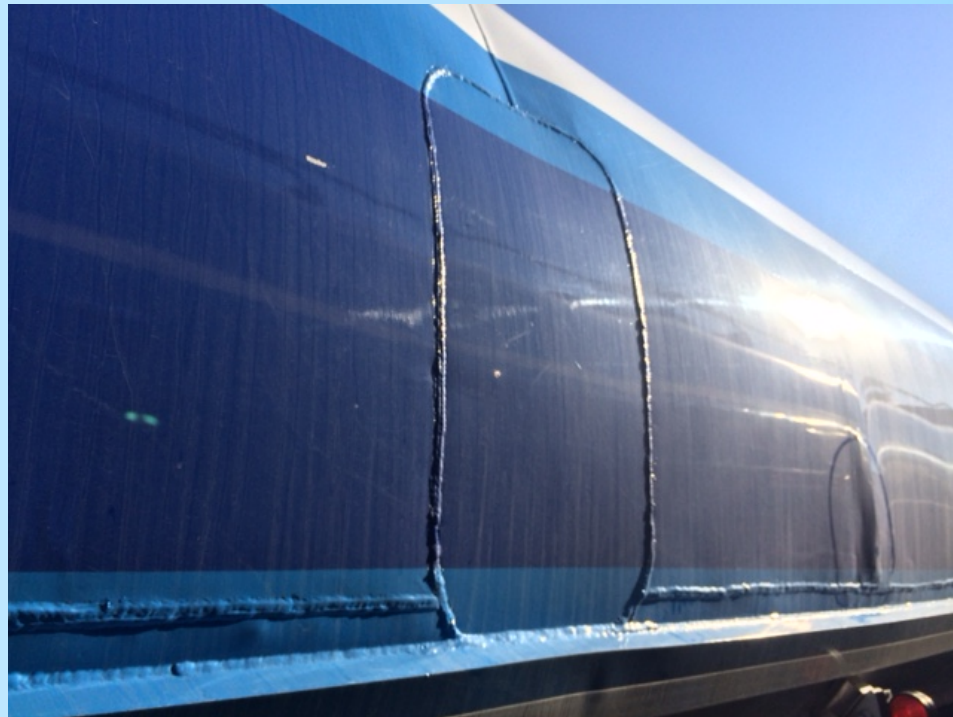
## Vehicles must be fit for purpose

- DG is dangerous!
- DG vehicles must be fit for purpose and maintained so that they stay that way
- The more dangerous the product the better the vehicle should be
- Relegate tankers in poor condition to non-DG work or refit them
- If properly maintained and free of defects, tankers can be used indefinitely – keep them maintained!

# Vehicles must be fit for purpose



# Vehicles must be fit for purpose



# Vehicles must be fit for purpose



# Vehicles must be fit for purpose



# Vehicles must be fit for purpose



# Vehicles must be fit for purpose





# Vehicles must be fit for purpose



## Requirement to fit Roll Stability System (RSS)

- Applies to **all** DG tank trailers **operated** in NSW regardless of origin
- Must be fitted and operational from 1 January 2019
- Consignors must not load tankers for deliveries into NSW if tanker trailer not fitted with RSS




## Tank Vehicle Safety Initiatives

### Roll Stability System (RSS)

- Vehicles will be *Unsuitable Vehicles* if not fitted with RSS and it is in operation
- Consignors and loading facilities must have a system in place to ensure only suitable vehicles are loaded
- Compliance enforcement activities will be undertaken in 2019



# Identifying RSS on Tank Trailers

 <b>KNORR-BREMSE</b> ECUtalk® for TEBS G2 (v.1.2.0.9)		TEBS G2		ES2060		K019302		E45 13R-32327	
		SW Version		ET6A.0000700.0000068		KB Help Centre		+ 49 (0) 180 566 77 05	
		Type		Semi-trailer		Manufacturer		Vawdrey Australia	
		Brake calculation no.		AU08IMT0026		VIN		6HJVAWAUS8SE05448	
ABS Configuration		4S/2M				Unladen		Laden	
Bogie load unladen [kg]		5600		Airspring pressure [bar]		0.7		4.1	
Bogie load laden [kg]		20000		Suspension press. [bar]		-		-	
Sensing ring teeth		100		Ext. Sensor Voltage [V]		-		-	
Tyre diameter [mm]		1018		LS. Lever Length		-		-	
AUXIO1		Disabled		Spring Deflection [mm]		-		-	
AUXIO2		Disabled							
AUXIO3		Disabled							
P28		SP		Module turned		No		Pneumatic (CAN) [bar]	
SENS_IN1		Disabled		Control pressure [bar]		0.40		1.6 4.5 6.5	
SENS_SUP		Disabled		Brake press. unladen [bar]		0.60		1.2 3.0 4.2	
INPUT_E		-		Brake press. laden [bar]				1.7 4.6 6.5	
INPUT_F		-							



## Verifying RSS Operability

- ABS/EBS warning light does not light when ignition on but not cranked
- ABS/EBS warning light does not turn off when vehicle driven above 15Km/h
- Trailer solenoid valves don't 'click' when ignition turned on
- CAN bus voltage is not the same as the supply voltage (eg one is 24V and the other is 12V)
- Cables or connections damaged or corroded

## Dangerous Goods Tank Vehicle Inspection Manual (DGTVM)

- Developed in consultation with industry
- DG tank vehicle inspection checklist that covers the key safety requirements in the ADG Code and AS 2809
- Allows all fleet operators (large and small) to ensure vehicles are compliant with safety requirements and are maintained
- Allows consignors to demonstrate that the vehicles transporting their DG are safe
- Free on the EPA website



# DG Tank Vehicle Inspection Manual

## Dangerous Goods Tank Vehicle Inspection Manual

(DGTVIM V2.0)  
August 2018



## Dangerous Goods Tank Vehicle Inspection Manual

A new inspection manual for dangerous goods tanker vehicles will help transporters ensure their vehicle meets the requir...



Checklist from the DGTVM has been incorporated into the new version of AS2809 with frequency of testing and inspection included

# Questions?

