

NBTA Presentation : TrailerPulse - MyTransics Web Portal - TrailerFit



15:27 9 APRIL
2021



Hello Glenn, welcome to

MYTRANSICS



TX-CONNECT MP



TX-TRAILERFIT

Live Map of 9 trailers
 1 active 7 parked 1 Paused
 3 Alarms

TX - TRAILERFIT

https://tx-trailerfit.mytransics.com/live-map

WABCO Trailers - Live map

9 Trailers - Live activity

1 P 7 1
0

3 Alarms Last 2h

3 0 0 0 0
0 0

Trailer list

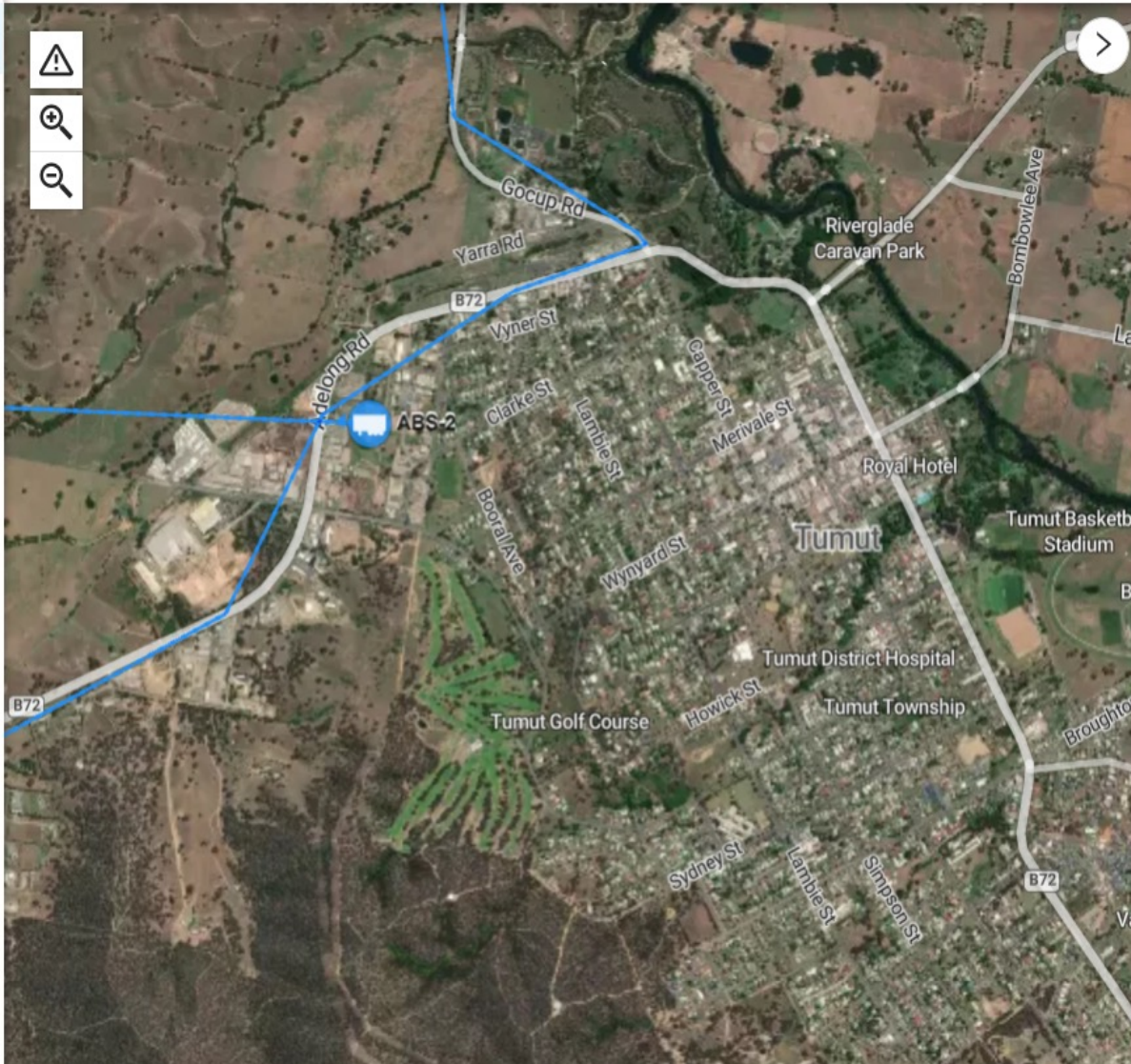
Trailer	Last 2h	Speed	Load	Last position
ABS-2		0 km/h	4.5 t	8 minutes ago
GTS-1		15.0 km/h	13.1 t	27 minutes ago
ABS-3		0 km/h	12.8 t	36 minutes ago
WAL-1		0 km/h	6.0 t	42 minutes ago
WAL-2		13.5 km/h	6.3 t	an hour ago
ABS-1		0 km/h	7.7 t	25 hours ago
GTS-2B		0 km/h	2.5 t	4 months ago
GTS-2A		0 km/h	4.0 t	4 months ago

© Mapbox © OpenStreetMap Improve this map

Live Map showing location and history of trailer

WABCO

Trailers - Live map



← ABS-2

Health

Trailer ID card

6D9KEN000KB029030

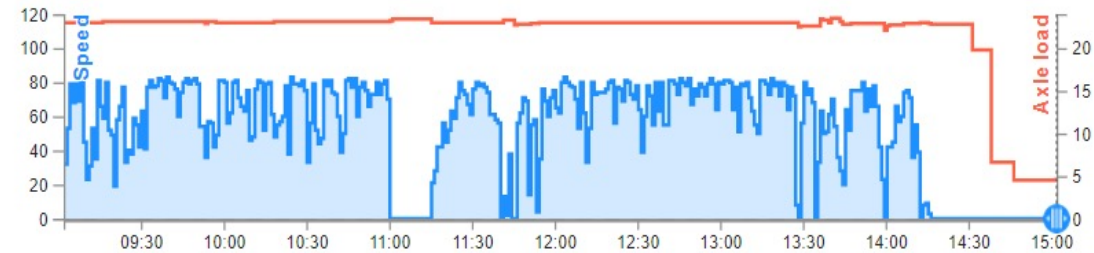


6 12 24 48 ho

Time: 15:01 09/04/2021 Speed: -- -km/h Axle load: 4.8t

History - Speed and Load

Now

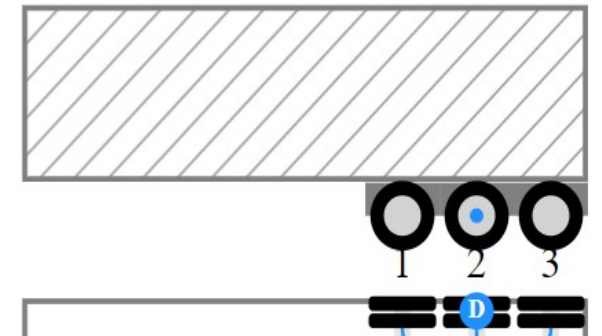


General information

VIN: 6D9KEN000KB029030
Brand: Kennedy Trailers
Model: 3 Axle Lead Semi
Category: Other
Production date: Sep 15, 2019
ABS system: 2S/2M
Suspension type: Air suspension

Vehicle type

Semi-trailer



Health of each trailer showing status of EBS systems

WABCO
Health passport - Fleet
🔔
👤

Evolution
List

ACTIVE TRAILERS

9

Critical

22%

2 trailers

Warning

0%

0 trailers

Info

0%

0 trailers

Safe

44%

4 trailers

Trailer	Status	Since	Score	Rec
WAL-2	Critical	Today / 30 km	5.3	<div style="width: 100%; height: 10px; background: linear-gradient(to right, gray, green);"></div>
WAL-1	Safe	Today / 19 km	4.4	<div style="width: 100%; height: 10px; background: linear-gradient(to right, green, yellow, red);"></div>
GTS-1	Safe	Yesterday / 696 km	3.2	<div style="width: 100%; height: 10px; background: linear-gradient(to right, red, yellow, green);"></div>
ABS-3	Safe	Today / 688 km	2.1	<div style="width: 100%; height: 10px; background: linear-gradient(to right, gray, yellow, red);"></div>
ABS-2	Safe	Today / 364 km	1.9	<div style="width: 100%; height: 10px; background: linear-gradient(to right, red, yellow, green);"></div>
ABS-1	Critical	6 days / 9 km	1.2	<div style="width: 100%; height: 10px; background: linear-gradient(to right, yellow, green, gray);"></div>

Alert Notifications

Red Warning Lamp notification

TX - TRAILERFIT

https://tx-trailerfit.mytransics.com/notifications

WABCO Notifications

Alert

- EBS amber light
- Harsh Braking
- RSS
- Driving without ISO cable
- EBS red light
- TPMS
- ABS

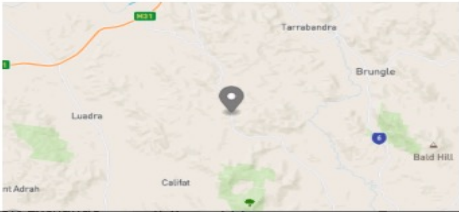

Wed 07 06:00 12:00 18:00 Thu 08 06:00 12:00 18:00 Fri 09 06:00 12:00

ABS-2 2021-04-07 2021-04-09

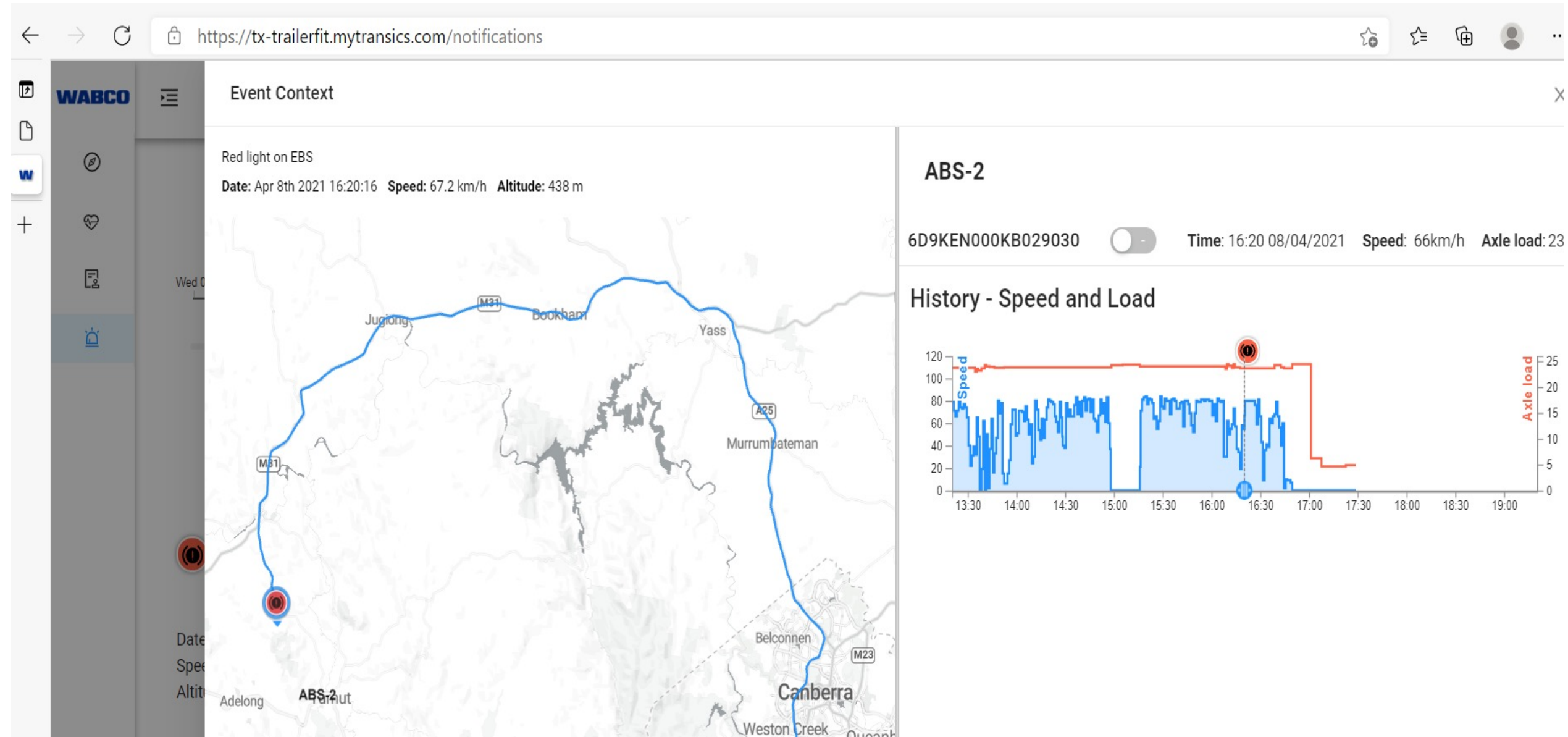
Results 1 - 5 of 5 on 1 page

ABS-2
Red light on EBS
Date: 16:20:16 Apr 8th 2021
Speed: 67.2 km/h
Altitude: 438 m

ABS-2
Amber light on EBS
Date: 16:20:16 Apr 8th 2021
Speed: 67.2 km/h
Altitude: 438 m



Red Warning Lamp by location date and time



Trailer Identification Card

WABCO

Trailer - ID card



General info

Events

Installation

ODR Files

Histograms

General information

VIN: 6D9KEN000KB029030

Brand: Kennedy Trailers

Model: 3 Axle Lead Semi

Category: Other

Production date: Sep 15, 2019

ABS system: 2S/2M

Suspension type: Air suspension

EBS type: MultiVoltage

EBS part number: [480 102 080 0](#)

EBS braking calc. num.: ABS52674S

Steering axle: No steering axle

Independent wheel suspension: Rigid axle

Tire choice: Twin tires

ODR EEPROM Size: 64

Axle details



Axle no. 1

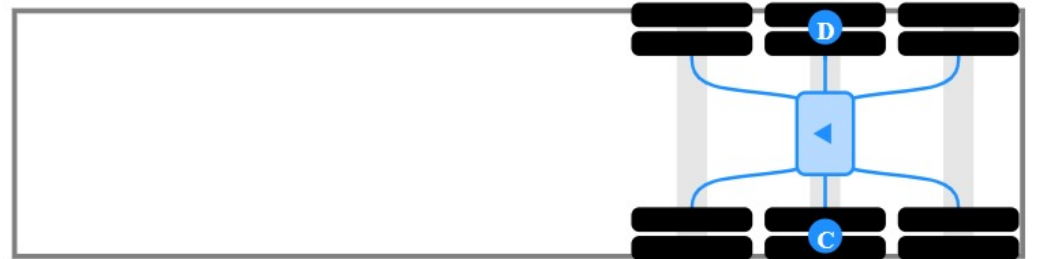
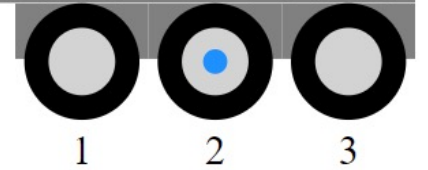
Load: 1,440 – 7,500 kg

Lift: No

Sensor: None

Vehicle type

Semi-trailer



Trailer Events summary page



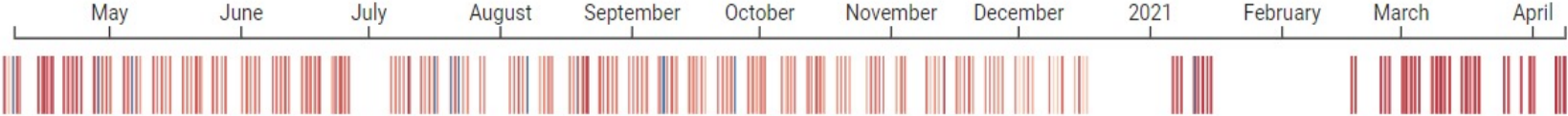
- ⓘ General info
- ⚠ **Events**
- 📁 Installation
- 📁 ODR Files
- 📊 Histograms

Events timeline ⚠

- Time / Mileage
- Exclude zero mileage
- 🔄 Refresh ODR

● Critical
● Important
● Info

Avg axle load ▾



Event list 📄 Export CSV

	Priority	Module	Issue	Date	Mileage	Fault Code	Actions
+	!	Supply pressure reservoir	see failure note	24/02/2021	61,898	144.12	read more
-	!						

Example of historical data – Brake applications v Control Line Pressure (blue Line)
Much more data available, such as max and min speed , weights

WABCO

Trailer - ID card



← Details for trailer ABS-2

Live map

Health

Share

Pick a trailer

General info

Histograms

Relative values on y-axis

Events

Data for each trailer is accumulated over the full time of recording the trailer

Installation

ODR Files

Histograms

Number of brake applications / Control pressure

